

Piccolo

# OMEA Scales

First musical staff showing a scale in C major, 4/4 time. The scale consists of eight measures: four ascending and four descending. The notes are C4, D4, E4, F4, G4, A4, B4, C5, B4, A4, G4, F4, E4, D4, C4. The piece ends with a double bar line.

Second musical staff showing a scale in D major, 4/4 time. The scale consists of eight measures: four ascending and four descending. The notes are D4, E4, F#4, G4, A4, B4, C#5, D5, C#5, B4, A4, G4, F#4, E4, D4. The piece ends with a double bar line.

Third musical staff showing a scale in E major, 4/4 time. The scale consists of eight measures: four ascending and four descending. The notes are E4, F#4, G#4, A4, B4, C#5, D#5, E5, D#5, C#5, B4, A4, G#4, F#4, E4. The piece ends with a double bar line.

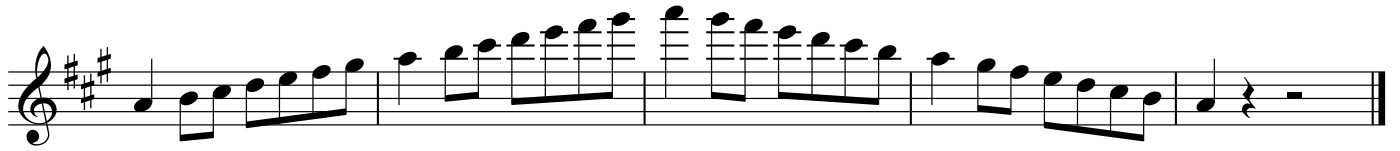
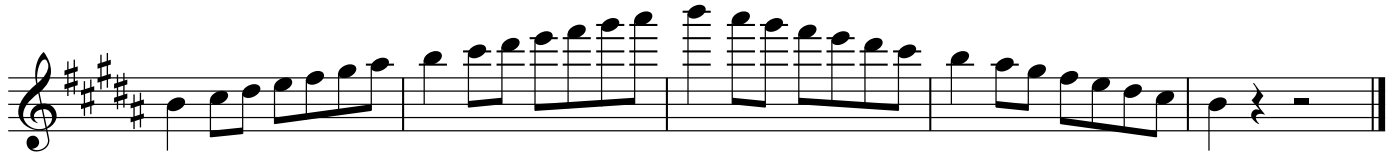
Fourth musical staff showing a scale in F major, 4/4 time. The scale consists of eight measures: four ascending and four descending. The notes are F4, G4, A4, Bb4, C5, D5, Eb5, F5, Eb5, D5, C5, Bb4, A4, G4, F4. The piece ends with a double bar line.

Fifth musical staff showing a scale in G major, 4/4 time. The scale consists of eight measures: four ascending and four descending. The notes are G4, A4, B4, C5, D5, E5, F#5, G5, F#5, E5, D5, C5, B4, A4, G4. The piece ends with a double bar line.

Sixth musical staff showing a scale in A major, 4/4 time. The scale consists of four measures: two ascending and two descending. The notes are A4, B4, C#5, D5, C#5, B4, A4. The piece ends with a double bar line.

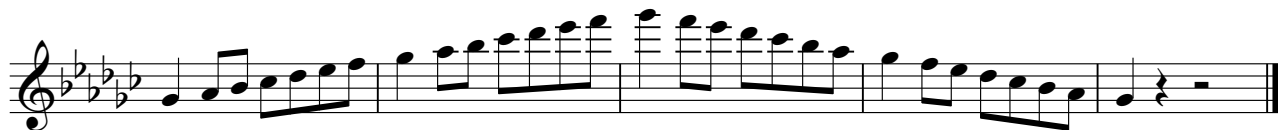
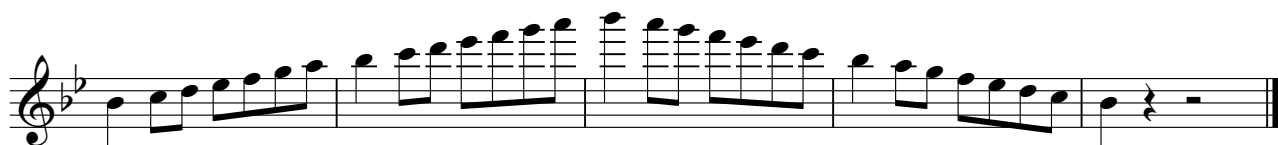
Seventh musical staff showing a scale in B major, 4/4 time. The scale consists of eight measures: four ascending and four descending. The notes are B4, C#5, D#5, E5, F#5, G#5, A#5, B5, A#5, G#5, F#5, E5, D#5, C#5, B4. The piece ends with a double bar line.

Piccolo

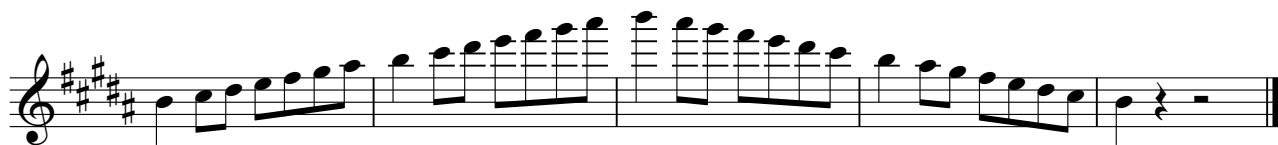


Flute

# OMEA Scales

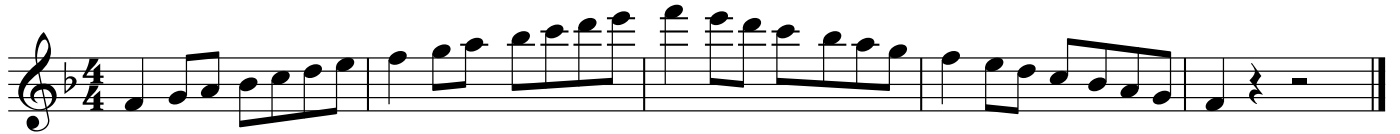


Flute



Oboe

# OMEA Scales



Oboe



Bassoon

# OMEA Scales





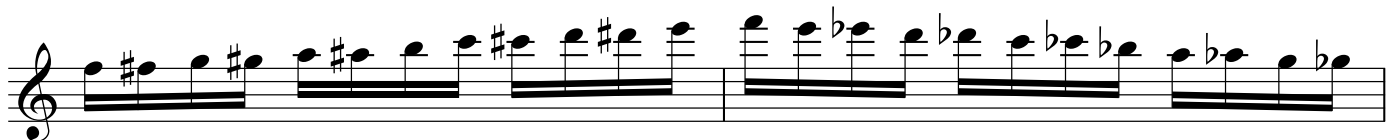


Bb Clarinet, Eb Clarinet

# OMEA Scales



Bb Clarinet, Eb Clarinet



Low Clarinets

# OMEA Scales



Low Clarinets



Saxophones

# OMEA Scales



Saxophones



Trumpet in B $\flat$

# OMEA Scales



Trumpet in B♭





Horn

# OMEA Scales

First staff: C major scale in 4/4 time. The scale is written in treble clef and consists of eight measures: C4 quarter, C4-E4 quarter, C4-F4 quarter, C4-G4 quarter, C4-A4 quarter, C4-B4 quarter, C5 quarter, and C5 quarter rest. The notes are: C, C, E, F, G, A, B, C.

Second staff: D major scale in 4/4 time. The scale is written in treble clef and consists of eight measures: D4 quarter, D4-F#4 quarter, D4-A4 quarter, D4-B4 quarter, D5 quarter, D5 quarter rest, D5 quarter, and D5 quarter rest. The notes are: D, D, F#, A, B, D, D, D.

Third staff: E major scale in 4/4 time. The scale is written in treble clef and consists of eight measures: E4 quarter, E4-G#4 quarter, E4-A4 quarter, E4-B4 quarter, E5 quarter, E5 quarter rest, E5 quarter, and E5 quarter rest. The notes are: E, E, G#, A, B, E, E, E.

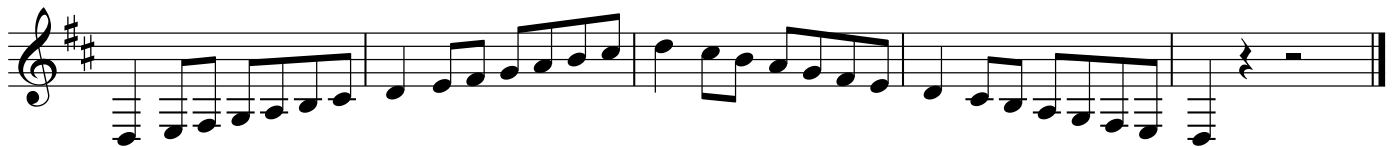
Fourth staff: F major scale in 4/4 time. The scale is written in treble clef and consists of eight measures: F4 quarter, F4-A4 quarter, F4-B4 quarter, F4-C5 quarter, F4-D5 quarter, F4-E5 quarter, F4 quarter, and F4 quarter rest. The notes are: F, F, A, B, C, D, F, F.

Fifth staff: G major scale in 4/4 time. The scale is written in treble clef and consists of eight measures: G4 quarter, G4-B4 quarter, G4-C5 quarter, G4-D5 quarter, G4-E5 quarter, G4-F#5 quarter, G4 quarter, and G4 quarter rest. The notes are: G, G, B, C, D, E, G, G.

Sixth staff: A major scale in 4/4 time. The scale is written in treble clef and consists of eight measures: A4 quarter, A4-C#4 quarter, A4-D4 quarter, A4-E4 quarter, A4-F#4 quarter, A4-G4 quarter, A4 quarter, and A4 quarter rest. The notes are: A, A, C#, D, E, F#, A, A.

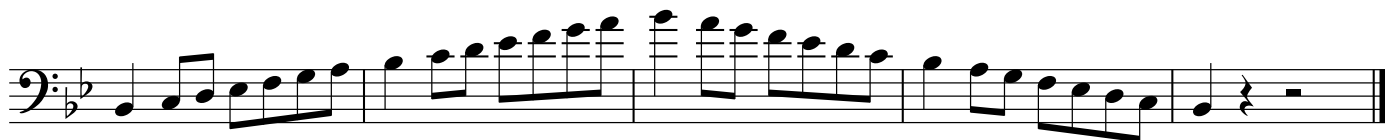
Seventh staff: B major scale in 4/4 time. The scale is written in treble clef and consists of eight measures: B4 quarter, B4-D#4 quarter, B4-E4 quarter, B4-F#4 quarter, B4-G4 quarter, B4-A4 quarter, B4 quarter, and B4 quarter rest. The notes are: B, B, D#, E, F#, G, B, B.

Horn



Trombone

# OMEA Scales



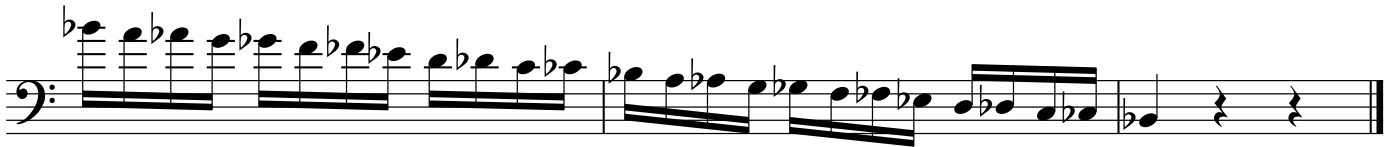
Trombone



# OMEA Scales



Euphonium - BC

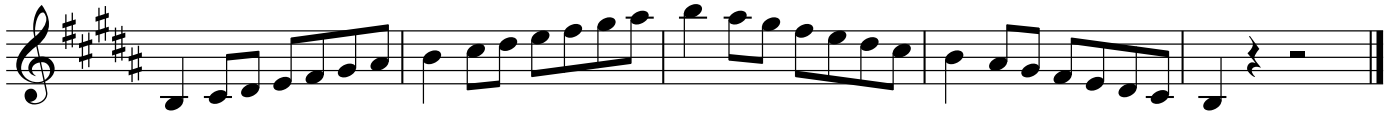


Euphonium TC

# OMEA Scales



Euphonium TC





Tuba

# OMEA Scales



