

Middle School Cimarron Valley Scales

Flute

♩ = 90

Bb Concert Scale



Eb Concert Scale



Ab Concert Scale



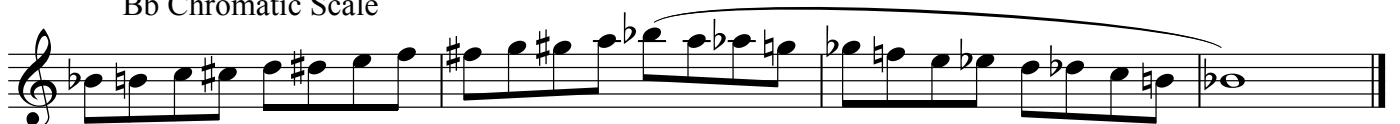
F Concert Scale



C Concert Scale



Bb Chromatic Scale



Middle School Cimarron Valley Scales

Oboe

♩ = 90

Bb Concert Scale

Musical notation for the Bb Concert Scale. The scale is written on a single staff in 4/4 time, starting on Bb. It consists of an ascending eighth-note scale, a half-note descending scale, and a whole-note final Bb. The key signature has two flats (Bb and Eb).

Eb Concert Scale

Musical notation for the Eb Concert Scale. The scale is written on a single staff in 4/4 time, starting on Eb. It consists of an ascending eighth-note scale, a half-note descending scale, and a whole-note final Eb. The key signature has three flats (Bb, Eb, and Ab).

Ab Concert Scale

Musical notation for the Ab Concert Scale. The scale is written on a single staff in 4/4 time, starting on Ab. It consists of an ascending eighth-note scale, a half-note descending scale, and a whole-note final Ab. The key signature has four flats (Bb, Eb, Ab, and Db).

F Concert Scale

Musical notation for the F Concert Scale. The scale is written on a single staff in 4/4 time, starting on F. It consists of an ascending eighth-note scale, a half-note descending scale, and a whole-note final F. The key signature has one flat (Bb).

C Concert Scale

Musical notation for the C Concert Scale. The scale is written on a single staff in 4/4 time, starting on C. It consists of an ascending eighth-note scale, a half-note descending scale, and a whole-note final C. The key signature has no flats or sharps.

Bb Chromatic Scale

Musical notation for the Bb Chromatic Scale. The scale is written on a single staff in 4/4 time, starting on Bb. It consists of an ascending chromatic scale (half-step intervals), a half-note descending chromatic scale, and a whole-note final Bb. The key signature has two flats (Bb and Eb).

Middle School Cimarron Valley Scales

Bassoon

♩ = 90

Bb Concert Scale

Musical notation for the Bb Concert Scale in bass clef, 4/4 time. The scale starts on Bb and ends on Bb. It consists of an ascending eighth-note scale, a half-note descending scale, and a whole-note Bb at the end.

Eb Concert Scale

Musical notation for the Eb Concert Scale in bass clef, 4/4 time. The scale starts on Eb and ends on Eb. It consists of an ascending eighth-note scale, a half-note descending scale, and a whole-note Eb at the end.

Ab Concert Scale

Musical notation for the Ab Concert Scale in bass clef, 4/4 time. The scale starts on Ab and ends on Ab. It consists of an ascending eighth-note scale, a half-note descending scale, and a whole-note Ab at the end.

F Concert Scale

Musical notation for the F Concert Scale in bass clef, 4/4 time. The scale starts on F and ends on F. It consists of an ascending eighth-note scale, a half-note descending scale, and a whole-note F at the end.

C Concert Scale

Musical notation for the C Concert Scale in bass clef, 4/4 time. The scale starts on C and ends on C. It consists of an ascending eighth-note scale, a half-note descending scale, and a whole-note C at the end.

Bb Chromatic Scale

Musical notation for the Bb Chromatic Scale in bass clef, 4/4 time. The scale starts on Bb and ends on Bb. It consists of an ascending chromatic scale, a half-note descending chromatic scale, and a whole-note Bb at the end.

Middle School Cimarron Valley Scales

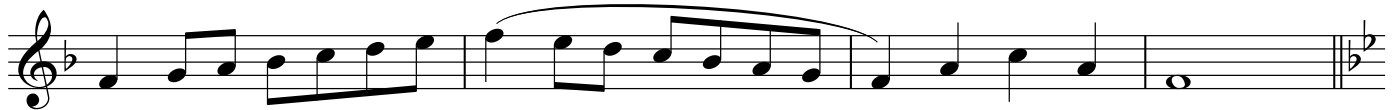
Clarinet in B \flat

$\text{♩} = 90$

B \flat Concert Scale



E \flat Concert Scale



A \flat Concert Scale



F Concert Scale



C Concert Scale



B \flat Chromatic Scale



Middle School Cimarron Valley Scales

Alto/Contralto Clarinet

♩ = 90

Bb Concert Scale

Musical notation for the Bb Concert Scale. The scale is written in treble clef with a key signature of one flat (Bb) and a 4/4 time signature. It consists of 12 measures: an 8-measure ascending run, a 4-measure descending run, and a final whole note Bb. A slur covers the descending run.

Eb Concert Scale

Musical notation for the Eb Concert Scale. The scale is written in treble clef with a key signature of three flats (Eb) and a 4/4 time signature. It consists of 12 measures: an 8-measure ascending run, a 4-measure descending run, and a final whole note Eb. A slur covers the descending run.

Ab Concert Scale

Musical notation for the Ab Concert Scale. The scale is written in treble clef with a key signature of four flats (Ab) and a 4/4 time signature. It consists of 12 measures: an 8-measure ascending run, a 4-measure descending run, and a final whole note Ab. A slur covers the descending run.

F Concert Scale

Musical notation for the F Concert Scale. The scale is written in treble clef with a key signature of one sharp (F#) and a 4/4 time signature. It consists of 12 measures: an 8-measure ascending run, a 4-measure descending run, and a final whole note F#. A slur covers the descending run.

C Concert Scale

Musical notation for the C Concert Scale. The scale is written in treble clef with a key signature of two sharps (C#) and a 4/4 time signature. It consists of 12 measures: an 8-measure ascending run, a 4-measure descending run, and a final whole note C#. A slur covers the descending run.

Bb Chromatic Scale

Musical notation for the Bb Chromatic Scale. The scale is written in treble clef with a key signature of one flat (Bb) and a 4/4 time signature. It consists of 12 measures of half notes: Bb, B, Bb, B, C, C#, C, C#, D, D#, D, D#, Eb, E, Eb, E, F, F#, F, F#, G, G#, G, G#, Ab, A, Ab, A, Bb, B, Bb, B. A slur covers the final 8 measures.

Middle School Cimarron Valley Scales

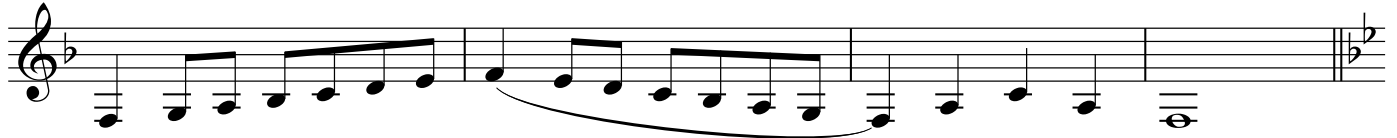
Bass Clarinet

♩ = 90

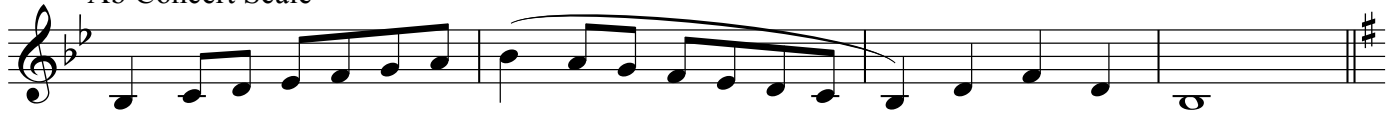
Bb Concert Scale



Eb Concert Scale



Ab Concert Scale



F Concert Scale



C Concert Scale



Bb Chromatic Scale



Middle School Cimarron Valley Scales

Alto Sax/Bari Sax

♩ = 90

Bb Concert Scale



Eb Concert Scale



Ab Concert Scale



F Concert Scale



C Concert Scale



Bb Chromatic Scale



Middle School Cimarron Valley Scales

Tenor Saxophone

♩ = 90

Bb Concert Scale



Eb Concert Scale



Ab Concert Scale



F Concert Scale



C Concert Scale



Bb Chromatic Scale



Middle School Cimarron Valley Scales

Trumpet in B \flat

$\text{♩} = 90$

B \flat Concert Scale



E \flat Concert Scale



A \flat Concert Scale



F Concert Scale



C Concert Scale



B \flat Chromatic Scale



Horn in F Middle School Cimarron Valley Scales

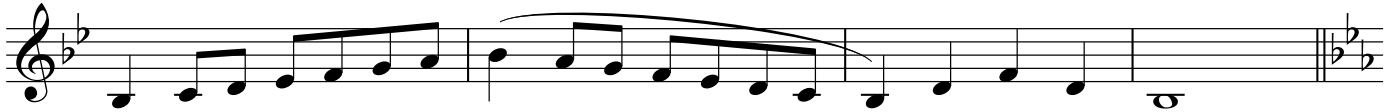
♩ = 90

Bb Concert Scale



Musical notation for the Bb Concert Scale in 4/4 time. The scale is written on a single treble clef staff. It begins with a key signature of two flats (Bb and Eb) and a 4/4 time signature. The scale consists of 12 notes: Bb, C, D, Eb, F, G, Ab, Bb, C, D, Eb, F. The first six notes are beamed together, and the last six notes are also beamed together. A slur covers the entire scale. The piece ends with a double bar line and a repeat sign.

Eb Concert Scale



Musical notation for the Eb Concert Scale in 4/4 time. The scale is written on a single treble clef staff. It begins with a key signature of three flats (Bb, Eb, and Ab) and a 4/4 time signature. The scale consists of 12 notes: Eb, F, G, Ab, Bb, C, D, Eb, F, G, Ab, Bb. The first six notes are beamed together, and the last six notes are also beamed together. A slur covers the entire scale. The piece ends with a double bar line and a repeat sign.

Ab Concert Scale



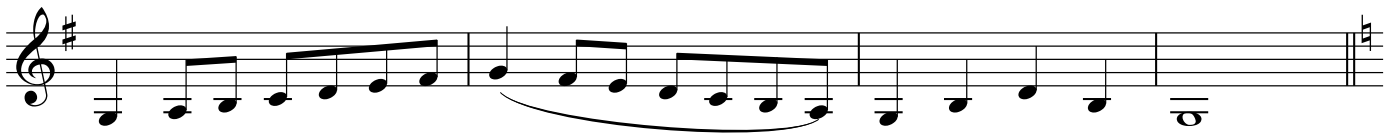
Musical notation for the Ab Concert Scale in 4/4 time. The scale is written on a single treble clef staff. It begins with a key signature of three flats (Bb, Eb, and Ab) and a 4/4 time signature. The scale consists of 12 notes: Ab, Bb, C, D, Eb, F, G, Ab, Bb, C, D, Eb. The first six notes are beamed together, and the last six notes are also beamed together. A slur covers the entire scale. The piece ends with a double bar line and a repeat sign.

F Concert Scale



Musical notation for the F Concert Scale in 4/4 time. The scale is written on a single treble clef staff. It begins with a key signature of one flat (Bb) and a 4/4 time signature. The scale consists of 12 notes: F, G, Ab, Bb, C, D, Eb, F, G, Ab, Bb, C. The first six notes are beamed together, and the last six notes are also beamed together. A slur covers the entire scale. The piece ends with a double bar line and a repeat sign.

C Concert Scale



Musical notation for the C Concert Scale in 4/4 time. The scale is written on a single treble clef staff. It begins with a key signature of one sharp (F#) and a 4/4 time signature. The scale consists of 12 notes: C, D, E, F#, G, A, B, C, D, E, F#, G. The first six notes are beamed together, and the last six notes are also beamed together. A slur covers the entire scale. The piece ends with a double bar line and a repeat sign.

Bb Chromatic Scale



Musical notation for the Bb Chromatic Scale in 4/4 time. The scale is written on a single treble clef staff. It begins with a key signature of two flats (Bb and Eb) and a 4/4 time signature. The scale consists of 24 notes: Bb, B, C, C#, D, D#, Eb, E, F, F#, G, G#, Ab, A, Bb, B, C, C#, D, D#, Eb, E, F, F#. The first 12 notes are beamed together, and the last 12 notes are also beamed together. A slur covers the entire scale. The piece ends with a double bar line and a repeat sign.

Trombone Middle School Cimarron Valley Scales

♩ = 90

Bb Concert Scale

Musical notation for the Bb Concert Scale in bass clef, 4/4 time. The scale starts on Bb and ends on Bb. It consists of an ascending eighth-note scale, a descending eighth-note scale, and a final whole note Bb. A slur covers the ascending and descending eighth-note passages.

Eb Concert Scale

Musical notation for the Eb Concert Scale in bass clef, 4/4 time. The scale starts on Eb and ends on Eb. It consists of an ascending eighth-note scale, a descending eighth-note scale, and a final whole note Eb. A slur covers the ascending and descending eighth-note passages.

Ab Concert Scale

Musical notation for the Ab Concert Scale in bass clef, 4/4 time. The scale starts on Ab and ends on Ab. It consists of an ascending eighth-note scale, a descending eighth-note scale, and a final whole note Ab. A slur covers the ascending and descending eighth-note passages.

F Concert Scale

Musical notation for the F Concert Scale in bass clef, 4/4 time. The scale starts on F and ends on F. It consists of an ascending eighth-note scale, a descending eighth-note scale, and a final whole note F. A slur covers the ascending and descending eighth-note passages.

C Concert Scale

Musical notation for the C Concert Scale in bass clef, 4/4 time. The scale starts on C and ends on C. It consists of an ascending eighth-note scale, a descending eighth-note scale, and a final whole note C. A slur covers the ascending and descending eighth-note passages.

Bb Chromatic Scale

Musical notation for the Bb Chromatic Scale in bass clef, 4/4 time. The scale starts on Bb and ends on Bb. It consists of an ascending chromatic scale, a descending chromatic scale, and a final whole note Bb. A slur covers the ascending and descending chromatic passages.

Middle School Cimarron Valley Scales

Euphonium

♩ = 90

Bb Concert Scale

Musical notation for the Bb Concert Scale in bass clef, 4/4 time. The scale starts on Bb and ends on Bb. It consists of an ascending eighth-note scale, a half-note descending scale, and a whole-note Bb. The key signature has two flats (Bb and Eb).

Eb Concert Scale

Musical notation for the Eb Concert Scale in bass clef, 4/4 time. The scale starts on Eb and ends on Eb. It consists of an ascending eighth-note scale, a half-note descending scale, and a whole-note Eb. The key signature has three flats (Bb, Eb, and Ab).

Ab Concert Scale

Musical notation for the Ab Concert Scale in bass clef, 4/4 time. The scale starts on Ab and ends on Ab. It consists of an ascending eighth-note scale, a half-note descending scale, and a whole-note Ab. The key signature has four flats (Bb, Eb, Ab, and Db).

F Concert Scale

Musical notation for the F Concert Scale in bass clef, 4/4 time. The scale starts on F and ends on F. It consists of an ascending eighth-note scale, a half-note descending scale, and a whole-note F. The key signature has one flat (Bb).

C Concert Scale

Musical notation for the C Concert Scale in bass clef, 4/4 time. The scale starts on C and ends on C. It consists of an ascending eighth-note scale, a half-note descending scale, and a whole-note C. The key signature has no flats or sharps.

Bb Chromatic Scale

Musical notation for the Bb Chromatic Scale in bass clef, 4/4 time. The scale starts on Bb and ends on Bb. It consists of an ascending chromatic scale (half-note intervals), a half-note descending chromatic scale, and a whole-note Bb. The key signature has two flats (Bb and Eb).

Middle School Cimarron Valley Scales

Euphonium Treble Clef

♩ = 90

Bb Concert Scale



Eb Concert Scale



Ab Concert Scale



F Concert Scale



C Concert Scale



Bb Chromatic Scale



Middle School Cimarron Valley Scales

Tuba

♩ = 90

Bb Concert Scale

Musical notation for the Bb Concert Scale in bass clef, 4/4 time. The scale starts on Bb and ends on Bb. The notes are: Bb, C, D, Eb, F, G, Ab, Bb. The first four notes (Bb, C, D, Eb) are beamed together. The next four notes (F, G, Ab, Bb) are also beamed together. A slur covers the entire scale. The piece ends with a double bar line and a Bb note.

Eb Concert Scale

Musical notation for the Eb Concert Scale in bass clef, 4/4 time. The scale starts on Eb and ends on Eb. The notes are: Eb, F, G, Ab, Bb, C, D, Eb. The first four notes (Eb, F, G, Ab) are beamed together. The next four notes (Bb, C, D, Eb) are also beamed together. A slur covers the entire scale. The piece ends with a double bar line and an Eb note.

Ab Concert Scale

Musical notation for the Ab Concert Scale in bass clef, 4/4 time. The scale starts on Ab and ends on Ab. The notes are: Ab, Bb, C, D, Eb, F, G, Ab. The first four notes (Ab, Bb, C, D) are beamed together. The next four notes (Eb, F, G, Ab) are also beamed together. A slur covers the entire scale. The piece ends with a double bar line and an Ab note.

F Concert Scale

Musical notation for the F Concert Scale in bass clef, 4/4 time. The scale starts on F and ends on F. The notes are: F, G, Ab, Bb, C, D, E, F. The first four notes (F, G, Ab, Bb) are beamed together. The next four notes (C, D, E, F) are also beamed together. A slur covers the entire scale. The piece ends with a double bar line and an F note.

C Concert Scale

Musical notation for the C Concert Scale in bass clef, 4/4 time. The scale starts on C and ends on C. The notes are: C, D, E, F, G, Ab, Bb, C. The first four notes (C, D, E, F) are beamed together. The next four notes (G, Ab, Bb, C) are also beamed together. A slur covers the entire scale. The piece ends with a double bar line and a C note.

Bb Chromatic Scale

Musical notation for the Bb Chromatic Scale in bass clef, 4/4 time. The scale starts on Bb and ends on Bb. The notes are: Bb, B, C, C#, D, D#, Eb, E, F, F#, G, G#, Ab, A, Bb. The first four notes (Bb, B, C, C#) are beamed together. The next four notes (D, D#, Eb, E) are also beamed together. The next four notes (F, F#, G, G#) are beamed together. The last four notes (Ab, A, Bb, Bb) are beamed together. A slur covers the entire scale. The piece ends with a double bar line and a Bb note.

Middle School Cimarron Valley Scales

Mallet Percussion

♩ = 90

Bb Concert Scale



Eb Concert Scale



Ab Concert Scale



F Concert Scale



C Concert Scale



Bb Chromatic Scale

