

Flute

High School Cimarron Valley Scales

♩ = 90

Bb Concert Scale

Musical notation for the Bb Concert Scale. It is written on a single staff in 4/4 time with a key signature of two flats (Bb and Eb). The scale starts on Bb and ends on Bb. The notation includes a treble clef, a 4/4 time signature, and a double bar line at the end.

5 Eb Concert Scale

Musical notation for the Eb Concert Scale. It is written on a single staff in 4/4 time with a key signature of three flats (Bb, Eb, and Ab). The scale starts on Eb and ends on Eb. The notation includes a treble clef, a 4/4 time signature, and a double bar line at the end.

9 Ab Concert Scale

Musical notation for the Ab Concert Scale. It is written on a single staff in 4/4 time with a key signature of four flats (Bb, Eb, Ab, and Db). The scale starts on Ab and ends on Ab. The notation includes a treble clef, a 4/4 time signature, and a double bar line at the end.

13 Db Concert Scale

Musical notation for the Db Concert Scale. It is written on a single staff in 4/4 time with a key signature of five flats (Bb, Eb, Ab, Db, and Fb). The scale starts on Db and ends on Db. The notation includes a treble clef, a 4/4 time signature, and a double bar line at the end.

17 F Concert Scale

Musical notation for the F Concert Scale. It is written on a single staff in 4/4 time with a key signature of one flat (Bb). The scale starts on F and ends on F. The notation includes a treble clef, a 4/4 time signature, and a double bar line at the end.

21 C Concert Scale

Musical notation for the C Concert Scale. It is written on a single staff in 4/4 time with a key signature of no sharps or flats. The scale starts on C and ends on C. The notation includes a treble clef, a 4/4 time signature, and a double bar line at the end.

25 G Concert Scale

Musical notation for the G Concert Scale. It is written on a single staff in 4/4 time with a key signature of one sharp (F#). The scale starts on G and ends on G. The notation includes a treble clef, a 4/4 time signature, and a double bar line at the end.

29 D Concert Scale

Musical notation for the D Concert Scale. It is written on a single staff in 4/4 time with a key signature of two sharps (F# and C#). The scale starts on D and ends on D. The notation includes a treble clef, a 4/4 time signature, and a double bar line at the end.

33 Chromatic Scale

Musical notation for the Chromatic Scale. It is written on a single staff in 4/4 time with a key signature of no sharps or flats. The scale starts on C and ends on C, moving chromatically through all twelve notes. The notation includes a treble clef, a 4/4 time signature, and a double bar line at the end.

Musical notation for the Eb Concert Scale. It is written on a single staff in 4/4 time with a key signature of three flats (Bb, Eb, and Ab). The scale starts on Eb and ends on Eb. The notation includes a treble clef, a 4/4 time signature, and a double bar line at the end.

High School Cimarron Valley Scales

Oboe

♩ = 90

Bb Concert Scale

Musical notation for the Bb Concert Scale. It is written on a single staff in 4/4 time. The scale starts on Bb and ends on Bb. The first four measures are an ascending eighth-note scale. The next four measures are a descending eighth-note scale. The final two measures are a whole note Bb.

5 Eb Concert Scale

Musical notation for the Eb Concert Scale. It is written on a single staff in 4/4 time. The scale starts on Eb and ends on Eb. The first four measures are an ascending eighth-note scale. The next four measures are a descending eighth-note scale. The final two measures are a whole note Eb.

9 Ab Concert Scale

Musical notation for the Ab Concert Scale. It is written on a single staff in 4/4 time. The scale starts on Ab and ends on Ab. The first four measures are an ascending eighth-note scale. The next four measures are a descending eighth-note scale. The final two measures are a whole note Ab.

13 Db Concert Scale

Musical notation for the Db Concert Scale. It is written on a single staff in 4/4 time. The scale starts on Db and ends on Db. The first four measures are an ascending eighth-note scale. The next four measures are a descending eighth-note scale. The final two measures are a whole note Db.

17 F Concert Scale

Musical notation for the F Concert Scale. It is written on a single staff in 4/4 time. The scale starts on F and ends on F. The first four measures are an ascending eighth-note scale. The next four measures are a descending eighth-note scale. The final two measures are a whole note F.

21 C Concert Scale

Musical notation for the C Concert Scale. It is written on a single staff in 4/4 time. The scale starts on C and ends on C. The first four measures are an ascending eighth-note scale. The next four measures are a descending eighth-note scale. The final two measures are a whole note C.

25 G Concert Scale

Musical notation for the G Concert Scale. It is written on a single staff in 4/4 time. The scale starts on G and ends on G. The first four measures are an ascending eighth-note scale. The next four measures are a descending eighth-note scale. The final two measures are a whole note G.

29 D Concert Scale

Musical notation for the D Concert Scale. It is written on a single staff in 4/4 time. The scale starts on D and ends on D. The first four measures are an ascending eighth-note scale. The next four measures are a descending eighth-note scale. The final two measures are a whole note D.

33 Chromatic Scale

Musical notation for the Chromatic Scale. It is written on a single staff in 4/4 time. The scale starts on C and ends on C. It consists of 12 measures of eighth notes, alternating between ascending and descending chromatic lines.

36

Musical notation for the final scale. It is written on a single staff in 4/4 time. The scale starts on Bb and ends on Bb. It consists of 12 measures of eighth notes, alternating between ascending and descending chromatic lines.

High School Cimarron Valley Scales

Bassoon

♩ = 90

Bb Concert Scale



5 Eb Concert Scale



9 Ab Concert Scale



13 Db Concert Scale



17 F Concert Scale



21 C Concert Scale



25 G Concert Scale



29 D Concert Scale



33 Chromatic Scale



36



High School Cimarron Valley Scales

Clarinet in B \flat

$\text{♩} = 90$

B \flat Concert Scale



5 E \flat Concert Scale



9 A \flat Concert Scale



13 D \flat Concert Scale



17 F Concert Scale



21 C Concert Scale



25 G Concert Scale



29 D Concert Scale



33 Chromatic Scale



36



High School Cimarron Valley Scales

Alto/Contralto Clarinet

♩ = 90

Bb Concert Scale

Musical notation for the Bb Concert Scale, starting on Bb4 and ending on Bb5. The scale is written in 4/4 time with a treble clef and a key signature of two flats. It consists of 8 measures: an ascending eighth-note scale, a descending eighth-note scale, and a final whole note Bb5.

5 Eb Concert Scale

Musical notation for the Eb Concert Scale, starting on Eb4 and ending on Eb5. The scale is written in 4/4 time with a treble clef and a key signature of three flats. It consists of 8 measures: an ascending eighth-note scale, a descending eighth-note scale, and a final whole note Eb5.

9 Ab Concert Scale

Musical notation for the Ab Concert Scale, starting on Ab4 and ending on Ab5. The scale is written in 4/4 time with a treble clef and a key signature of four flats. It consists of 8 measures: an ascending eighth-note scale, a descending eighth-note scale, and a final whole note Ab5.

13 Db Concert Scale

Musical notation for the Db Concert Scale, starting on Db4 and ending on Db5. The scale is written in 4/4 time with a treble clef and a key signature of five flats. It consists of 8 measures: an ascending eighth-note scale, a descending eighth-note scale, and a final whole note Db5.

17 F Concert Scale

Musical notation for the F Concert Scale, starting on F4 and ending on F5. The scale is written in 4/4 time with a treble clef and a key signature of one flat. It consists of 8 measures: an ascending eighth-note scale, a descending eighth-note scale, and a final whole note F5.

21 C Concert Scale

Musical notation for the C Concert Scale, starting on C4 and ending on C5. The scale is written in 4/4 time with a treble clef and a key signature of no sharps or flats. It consists of 8 measures: an ascending eighth-note scale, a descending eighth-note scale, and a final whole note C5.

25 G Concert Scale

Musical notation for the G Concert Scale, starting on G4 and ending on G5. The scale is written in 4/4 time with a treble clef and a key signature of one sharp. It consists of 8 measures: an ascending eighth-note scale, a descending eighth-note scale, and a final whole note G5.

29 D Concert Scale

Musical notation for the D Concert Scale, starting on D4 and ending on D5. The scale is written in 4/4 time with a treble clef and a key signature of two sharps. It consists of 8 measures: an ascending eighth-note scale, a descending eighth-note scale, and a final whole note D5.

33 Chromatic Scale

Musical notation for the Chromatic Scale, starting on C4 and ending on C5. The scale is written in 4/4 time with a treble clef and a key signature of no sharps or flats. It consists of 8 measures of half notes, alternating between natural and sharp forms of each note: C4, C#4, D4, D#4, E4, E#4, F4, F#4, G4, G#4, A4, A#4, B4, B#4, C5.

36

Musical notation for the Chromatic Scale, starting on C5 and ending on C6. The scale is written in 4/4 time with a treble clef and a key signature of no sharps or flats. It consists of 8 measures of half notes, alternating between natural and flat forms of each note: C5, Cb5, B4, Bb4, A4, Ab4, G4, Gb4, F4, Fb4, E4, Eb4, D4, Db4, C5.

High School Cimarron Valley Scales

Bass Clarinet in B \flat

$\text{♩} = 90$

B \flat Concert Scale

Musical notation for the B \flat Concert Scale, starting on middle C (C4) and ascending to G5. The scale is written in 4/4 time with a treble clef. It consists of 11 notes: C4, D4, E4, F4, G4, A4, B4, C5, B4, A4, G4. The final note is a whole note G4.

5 E \flat Concert Scale

Musical notation for the E \flat Concert Scale, starting on E \flat 4 and ascending to G5. The scale is written in 4/4 time with a treble clef. It consists of 11 notes: E \flat 4, F4, G4, A4, B4, C5, B4, A4, G4, F4, E \flat 4. The final note is a whole note E \flat 4.

9 A \flat Concert Scale

Musical notation for the A \flat Concert Scale, starting on A \flat 4 and ascending to G5. The scale is written in 4/4 time with a treble clef. It consists of 11 notes: A \flat 4, B \flat 4, C5, B4, A4, G4, F4, E4, D4, C4, B3. The final note is a whole note A \flat 4.

13 D \flat Concert Scale

Musical notation for the D \flat Concert Scale, starting on D \flat 4 and ascending to G5. The scale is written in 4/4 time with a treble clef. It consists of 11 notes: D \flat 4, E \flat 4, F4, G4, A4, B4, C5, B4, A4, G4, F4. The final note is a whole note D \flat 4.

17 F Concert Scale

Musical notation for the F Concert Scale, starting on F4 and ascending to G5. The scale is written in 4/4 time with a treble clef. It consists of 11 notes: F4, G4, A4, B4, C5, B4, A4, G4, F4, E4, D4. The final note is a whole note F4.

21 C Concert Scale

Musical notation for the C Concert Scale, starting on C4 and ascending to G5. The scale is written in 4/4 time with a treble clef. It consists of 11 notes: C4, D4, E4, F4, G4, A4, B4, C5, B4, A4, G4. The final note is a whole note C4.

25 G Concert Scale

Musical notation for the G Concert Scale, starting on G4 and ascending to G5. The scale is written in 4/4 time with a treble clef. It consists of 11 notes: G4, A4, B4, C5, B4, A4, G4, F4, E4, D4, C4. The final note is a whole note G4.

29 D Concert Scale

Musical notation for the D Concert Scale, starting on D4 and ascending to G5. The scale is written in 4/4 time with a treble clef. It consists of 11 notes: D4, E4, F4, G4, A4, B4, C5, B4, A4, G4, F4. The final note is a whole note D4.

33 Chromatic Scale

Musical notation for the Chromatic Scale, starting on C4 and ascending to G5. The scale is written in 4/4 time with a treble clef. It consists of 12 notes: C4, C \sharp 4, D4, D \sharp 4, E4, E \sharp 4, F4, F \sharp 4, G4, G \sharp 4, A4, A \sharp 4. The final note is a whole note G5.

36

Musical notation for the descending chromatic scale, starting on G5 and descending to C3. The scale is written in 4/4 time with a treble clef. It consists of 12 notes: G5, F5, E5, D5, C5, B4, A4, G4, F4, E4, D4, C4. The final note is a whole note C3.

High School Cimarron Valley Scales

Alto Sax/Bari Sax

♩ = 90

Bb Concert Scale



5 Eb Concert Scale



9 Ab Concert Scale



13 Db Concert Scale



17 F Concert Scale



21 C Concert Scale



25 G Concert Scale



29 D Concert Scale



33 Chromatic Scale



36



High School Cimarron Valley Scales

Tenor Saxophone

♩ = 90

Bb Concert Scale



5 Eb Concert Scale



9 Ab Concert Scale



13 Db Concert Scale



17 F Concert Scale



21 C Concert Scale



25 G Concert Scale



29 D Concert Scale



33 Chromatic Scale



36



High School Cimarron Valley Scales

Trumpet in B \flat

$\text{♩} = 90$

B \flat Concert Scale



5 Eb Concert Scale



9 Ab Concert Scale



13 Db Concert Scale



17 F Concert Scale



21 C Concert Scale



25 G Concert Scale



29 D Concert Scale



33 Chromatic Scale



36



Horn in F

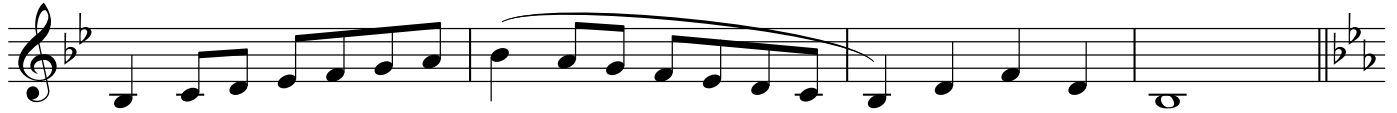
High School Cimarron Valley Scales

♩ = 90

Bb Concert Scale



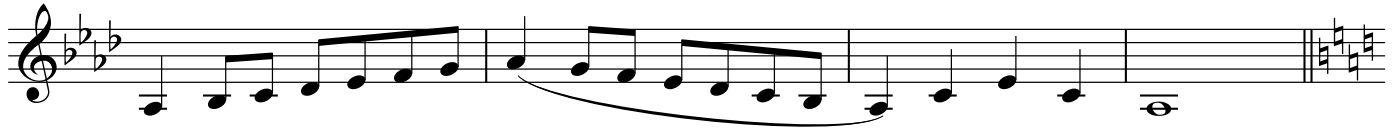
5 Eb Concert Scale



9 Ab Concert Scale



13 Db Concert Scale



17 F Concert Scale



21 C Concert Scale



25 G Concert Scale



29 D Concert Scale



33 Chromatic Scale



36



High School Cimarron Valley Scales

Trombone

♩ = 90

Bb Concert Scale



5 Eb Concert Scale



9 Ab Concert Scale



13 Db Concert Scale



17 F Concert Scale



21 C Concert Scale



25 G Concert Scale



29 D Concert Scale



33 Chromatic Scale



36



Euphonium

High School Cimarron Valley Scales

♩ = 90

Bb Concert Scale

Musical notation for the Bb Concert Scale in bass clef, 4/4 time. The scale starts on Bb and ends on Bb. It consists of two ascending and two descending lines of eighth notes, with a final whole note Bb. A slur covers the first two lines.

5 Eb Concert Scale

Musical notation for the Eb Concert Scale in bass clef, 4/4 time. The scale starts on Eb and ends on Eb. It consists of two ascending and two descending lines of eighth notes, with a final whole note Eb. A slur covers the first two lines.

9 Ab Concert Scale

Musical notation for the Ab Concert Scale in bass clef, 4/4 time. The scale starts on Ab and ends on Ab. It consists of two ascending and two descending lines of eighth notes, with a final whole note Ab. A slur covers the first two lines.

13 Db Concert Scale

Musical notation for the Db Concert Scale in bass clef, 4/4 time. The scale starts on Db and ends on Db. It consists of two ascending and two descending lines of eighth notes, with a final whole note Db. A slur covers the first two lines.

17 F Concert Scale

Musical notation for the F Concert Scale in bass clef, 4/4 time. The scale starts on F and ends on F. It consists of two ascending and two descending lines of eighth notes, with a final whole note F. A slur covers the first two lines.

21 C Concert Scale

Musical notation for the C Concert Scale in bass clef, 4/4 time. The scale starts on C and ends on C. It consists of two ascending and two descending lines of eighth notes, with a final whole note C. A slur covers the first two lines.

25 G Concert Scale

Musical notation for the G Concert Scale in bass clef, 4/4 time. The scale starts on G and ends on G. It consists of two ascending and two descending lines of eighth notes, with a final whole note G. A slur covers the first two lines.

29 D Concert Scale

Musical notation for the D Concert Scale in bass clef, 4/4 time. The scale starts on D and ends on D. It consists of two ascending and two descending lines of eighth notes, with a final whole note D. A slur covers the first two lines.

33 Chromatic Scale

Musical notation for the Chromatic Scale in bass clef, 4/4 time. The scale starts on C and ends on C. It consists of two ascending and two descending lines of eighth notes, with a final whole note C. A slur covers the first two lines.

36

Musical notation for a scale starting on Bb in bass clef, 4/4 time. The scale starts on Bb and ends on Bb. It consists of two ascending and two descending lines of eighth notes, with a final whole note Bb. A slur covers the first two lines.

High School Cimarron Valley Scales

Euphonium Treble Clef

♩ = 90

Bb Concert Scale



5 Eb Concert Scale



9 Ab Concert Scale



13 Db Concert Scale



17 F Concert Scale



21 C Concert Scale



25 G Concert Scale



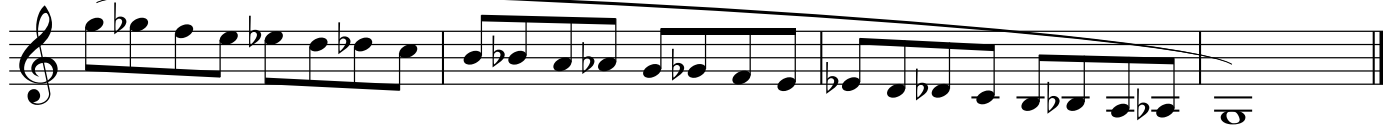
29 D Concert Scale



33 Chromatic Scale



36



High School Cimarron Valley Scales

Tuba

♩ = 90

Bb Concert Scale

Musical notation for the Bb Concert Scale in bass clef, 4/4 time. The scale starts on Bb and ends on Bb. The first four measures are an ascending eighth-note scale. The fifth measure is a half note Bb. The sixth measure is a half note Bb. The seventh measure is a half note Bb. The eighth measure is a half note Bb. The final measure is a whole note Bb.

5 Eb Concert Scale

Musical notation for the Eb Concert Scale in bass clef, 4/4 time. The scale starts on Eb and ends on Eb. The first four measures are an ascending eighth-note scale. The fifth measure is a half note Eb. The sixth measure is a half note Eb. The seventh measure is a half note Eb. The eighth measure is a half note Eb. The final measure is a whole note Eb.

9 Ab Concert Scale

Musical notation for the Ab Concert Scale in bass clef, 4/4 time. The scale starts on Ab and ends on Ab. The first four measures are an ascending eighth-note scale. The fifth measure is a half note Ab. The sixth measure is a half note Ab. The seventh measure is a half note Ab. The eighth measure is a half note Ab. The final measure is a whole note Ab.

13 Db Concert Scale

Musical notation for the Db Concert Scale in bass clef, 4/4 time. The scale starts on Db and ends on Db. The first four measures are an ascending eighth-note scale. The fifth measure is a half note Db. The sixth measure is a half note Db. The seventh measure is a half note Db. The eighth measure is a half note Db. The final measure is a whole note Db.

17 F Concert Scale

Musical notation for the F Concert Scale in bass clef, 4/4 time. The scale starts on F and ends on F. The first four measures are an ascending eighth-note scale. The fifth measure is a half note F. The sixth measure is a half note F. The seventh measure is a half note F. The eighth measure is a half note F. The final measure is a whole note F.

21 C Concert Scale

Musical notation for the C Concert Scale in bass clef, 4/4 time. The scale starts on C and ends on C. The first four measures are an ascending eighth-note scale. The fifth measure is a half note C. The sixth measure is a half note C. The seventh measure is a half note C. The eighth measure is a half note C. The final measure is a whole note C.

25 G Concert Scale

Musical notation for the G Concert Scale in bass clef, 4/4 time. The scale starts on G and ends on G. The first four measures are an ascending eighth-note scale. The fifth measure is a half note G. The sixth measure is a half note G. The seventh measure is a half note G. The eighth measure is a half note G. The final measure is a whole note G.

29 D Concert Scale

Musical notation for the D Concert Scale in bass clef, 4/4 time. The scale starts on D and ends on D. The first four measures are an ascending eighth-note scale. The fifth measure is a half note D. The sixth measure is a half note D. The seventh measure is a half note D. The eighth measure is a half note D. The final measure is a whole note D.

33 Chromatic Scale

Musical notation for the Chromatic Scale in bass clef, 4/4 time. The scale starts on C and ends on C. The first four measures are an ascending eighth-note scale. The fifth measure is a half note C. The sixth measure is a half note C. The seventh measure is a half note C. The eighth measure is a half note C. The final measure is a whole note C.

36

Musical notation for the Chromatic Scale continuation in bass clef, 4/4 time. The scale starts on Bb and ends on Bb. The first four measures are an ascending eighth-note scale. The fifth measure is a half note Bb. The sixth measure is a half note Bb. The seventh measure is a half note Bb. The eighth measure is a half note Bb. The final measure is a whole note Bb.

